

Design Idea C



Total SF:
893,347

Heights High
1680 Students

Monticello



4-8

700 4-8 Students

Wiley



4-8

700 4-8 Students

Roxboro



4-8

700 4-8 Students

Oxford



PK-3

420 K-3 Students
75 Pre-K Students

Canterbury



PK-3

420 K-3 Students
75 Pre-K Students

Boulevard



PK-3

420 K-3 Students
75 Pre-K Students

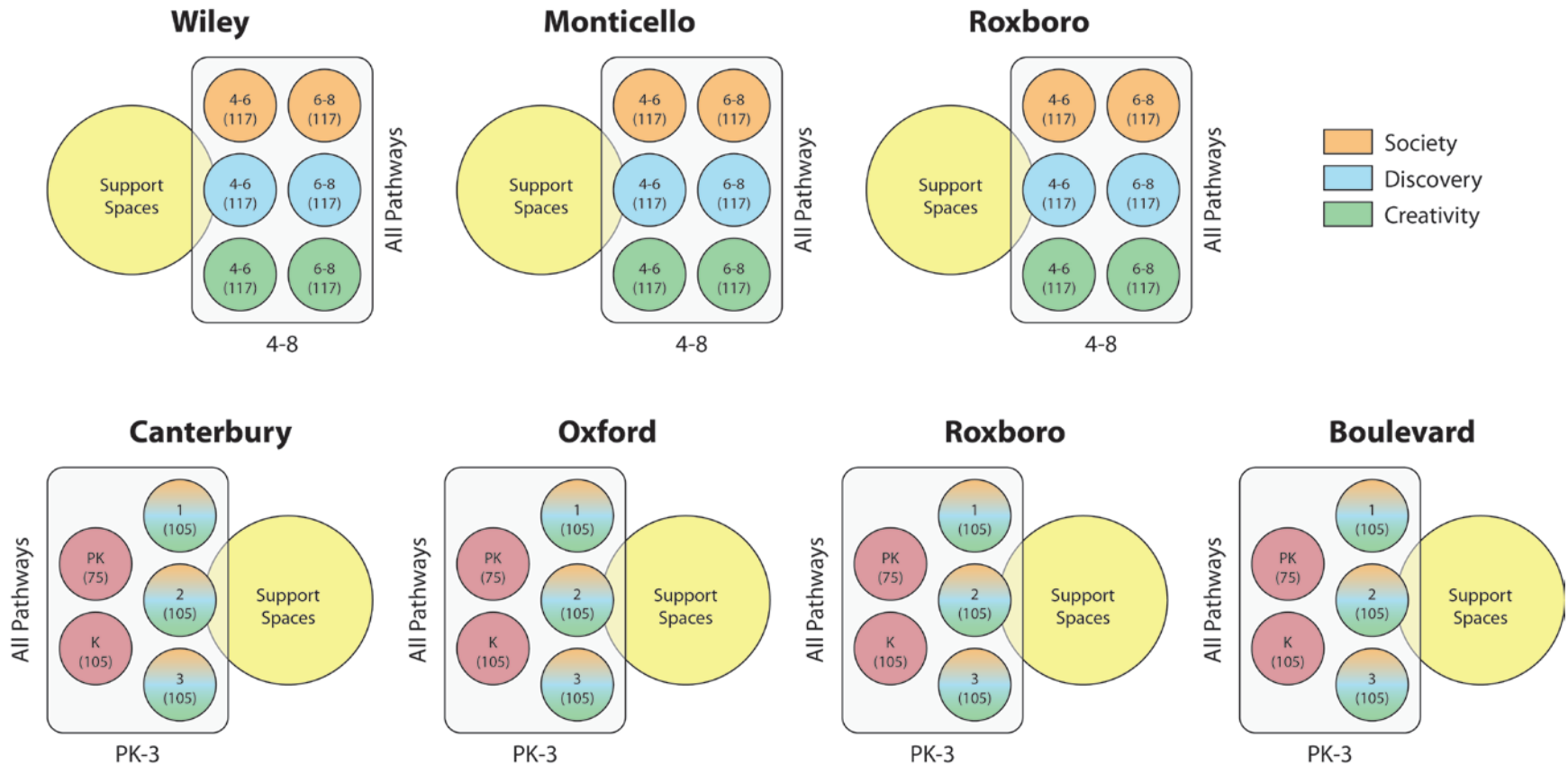
Roxboro



PK-3

420 K-3 Students
75 Pre-K Students

Design Idea C - Configurations



Design Idea C

Idea C

Site	Target Capacity				Total Target Capacity	No. of Learning Communities	Grade Configuration	Existing SF (IKG)	Existing SF (OSFC)	Square Footage			New Total SF
	PK	K-3	4-8	9-12						Demo	Reno	New	
Heights High				1680	1680	12	9-12	425,310	417,835	288,617	129,218	190,158	319,376
Monticello			700		700	6	4-8	124,700	124,062	65,412	58,650	40,174	98,824
Roxboro M			700		700	6	4-8	113,664	111,356	68,882	42,474	56,350	98,824
Wiley			700		700	6	4-8	159,712	139,774	0	135,155	0	139,774
Oxford	75	420			495	5	PK-3	60,550	58,764	0	58,764	0	58,764
Canterbury	75	420			495	5	PK-3	63,470	62,140	0	62,140	0	62,140
Boulevard	75	420			495	5	PK-3	60,164	53,016	53,016	0	60,876	60,876
Roxboro E	75	420			495	5	PK-3	58,600	54,769	0	54,769	0	54,769
					5760					475,927	541,170	347,558	893,347

Notes:

Used 420 as the average grade cohort size

Used OSFC Existing SF to calculate New Total SF

High School Program

Cleveland Heights-University Heights City School District

Idea C - High School Summary

Program Area	Total SF
Learning Community Spaces	68,760
Special Education Spaces	6,000
Administrative Spaces	8,000
Media Center Spaces (including REAL school)	13,000
Science	8,000
Visual Arts Spaces	5,500
Music Spaces	10,000
Business Education Spaces	4,000
Family and Consumer Science Spaces	4,000
Physical Education Spaces	30,000
Student Dining Spaces	4,500
Food Service Spaces	8,000
Performing Arts	18,000
Natatorium	23,200
Career Tech	26,020
Custodial Spaces	500
Program Space Total	237,480
Restrooms	3.5% 8,312
Circulation	10.0% 23,748
Mechanical & Electrical	6.9% 16,386
Building Services	1,800
Building Services Total	50,246
Facility Total	287,726
Construction Factor	11.0% 31,650
Gross Square Feet	319,376
Number of Students	1,680
SF per Student	190.10

Middle School Program

Cleveland Heights-University Heights City School District

Idea C - Grades 4-8 Summary

Program Area	Total SF
Learning Community Spaces	34,500
Special Education Spaces	3,000
Administrative Spaces	3,000
Media Center Spaces	2,200
Visual Arts Spaces	2,200
Music Spaces	3,000
Physical Education Spaces	10,500
Student Dining Spaces	3,000
Food Service Spaces	2,800
Performing Arts	8,000
Custodial Spaces	500
Program Space Total	72,700
Restrooms	3.5% 2,545
Circulation	10.0% 7,270
Mechanical & Electrical	6.9% 5,016
Building Services	1,500
Building Services Total	16,331
Facility Total	89,031
Construction Factor	11.0% 9,793
Gross Square Feet	98,824
Number of Students	
Middle (4-8)	700
	700
SF per Student	141.18

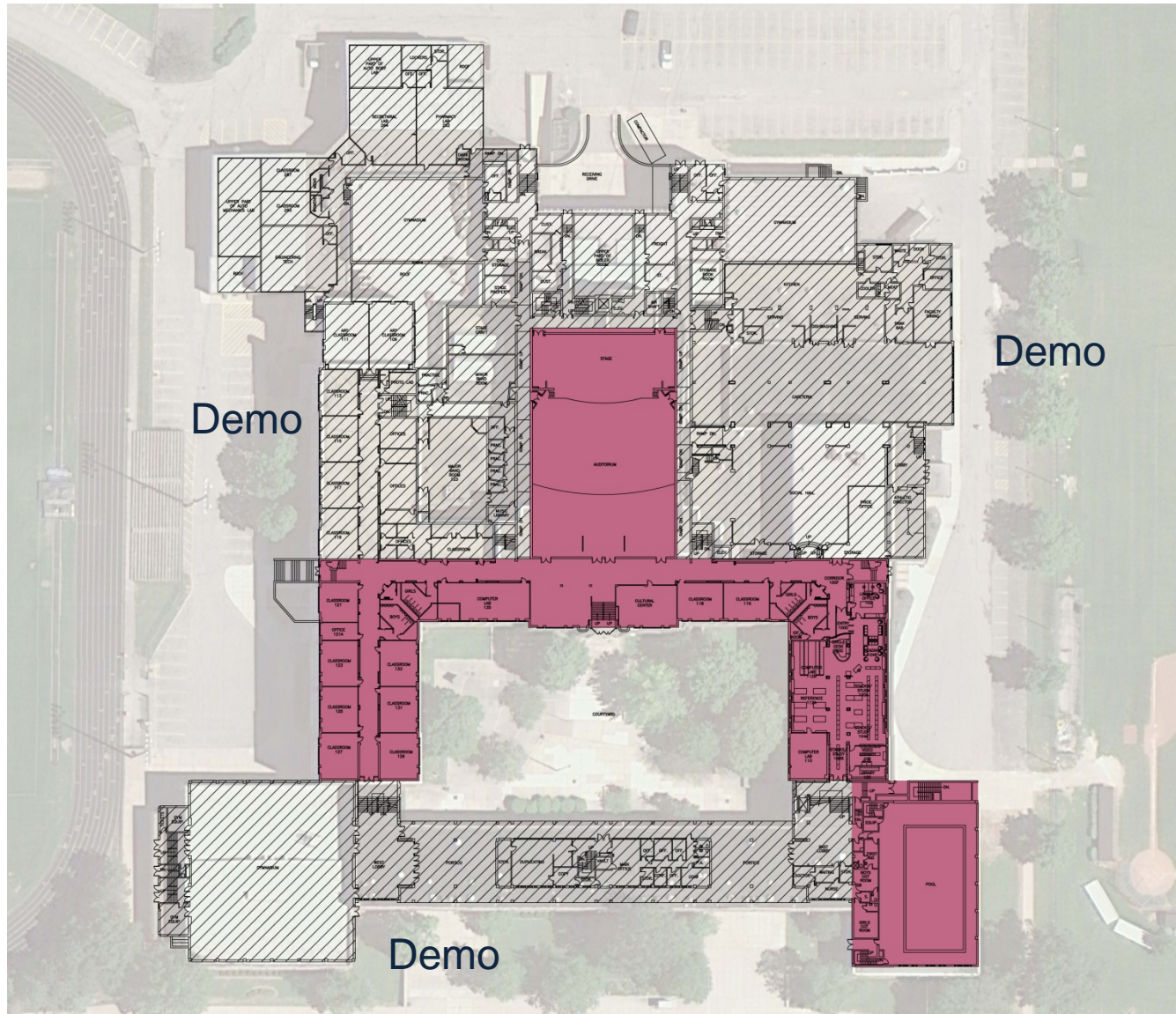
Elementary School Program

Cleveland Heights-University Heights City School District

Idea C - PK-3 Summary

Program Area	Total SF
Learning Community Spaces	26,020
Special Education Spaces	1,200
Administrative Spaces	2,200
Media Center Spaces	1,800
Visual Arts Spaces	1,400
Music Spaces	1,200
Physical Education Spaces	4,000
Student Dining Spaces	4,000
Food Service Spaces	2,500
Custodial Spaces	400
Program Space Total	44,720
Restrooms	3.5% 1,565
Circulation	10.0% 4,472
Mechanical & Electrical	6.9% 3,086
Building Services	1,000
Building Services Total	10,123
	Facility Total 54,843
Construction Factor	11.0% 6,033
	Gross Square Feet 60,876
Number of Students Elementary (PK-3)	495
	495
SF per Student	122.98

Idea C - High School Demo

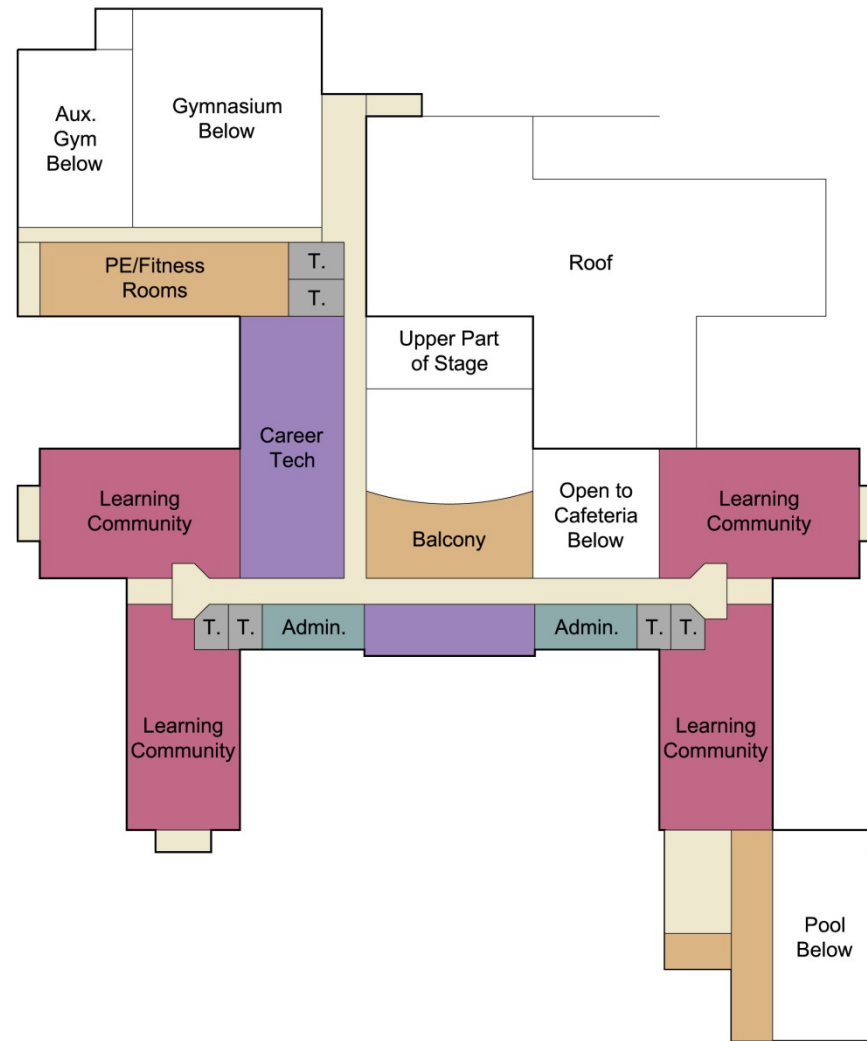


Idea C - High School Plan



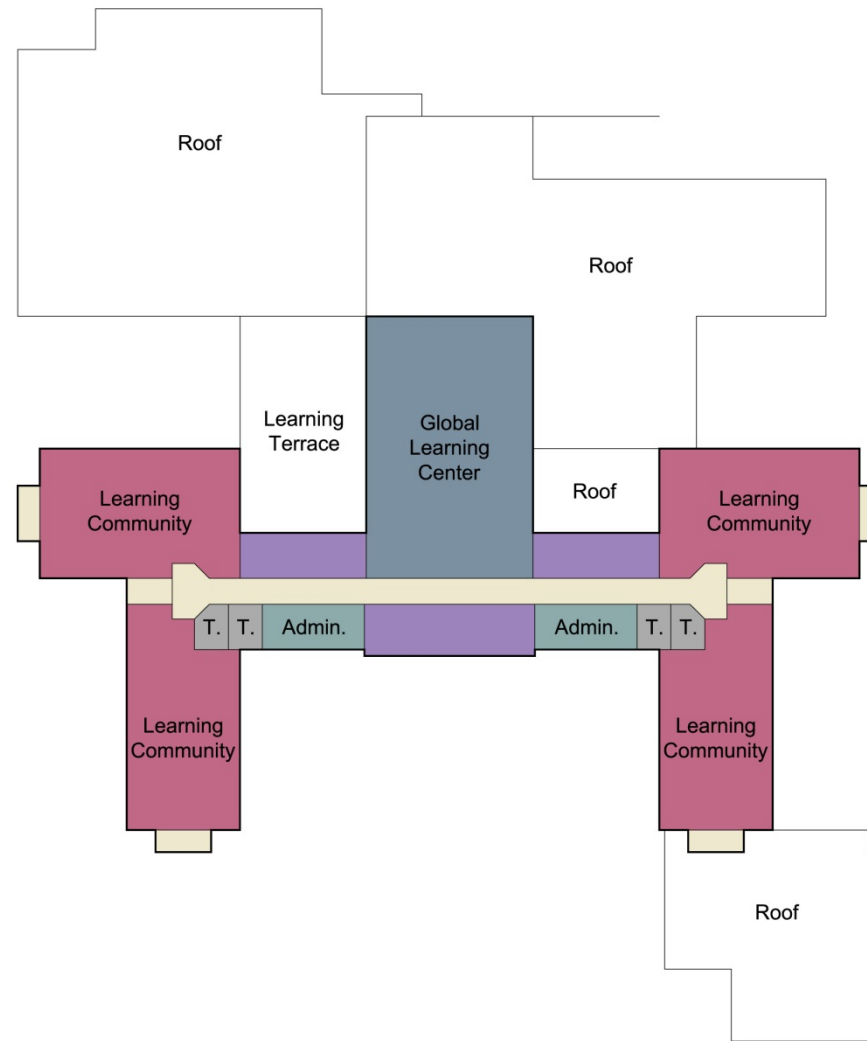
First Floor

Idea C - High School Plan



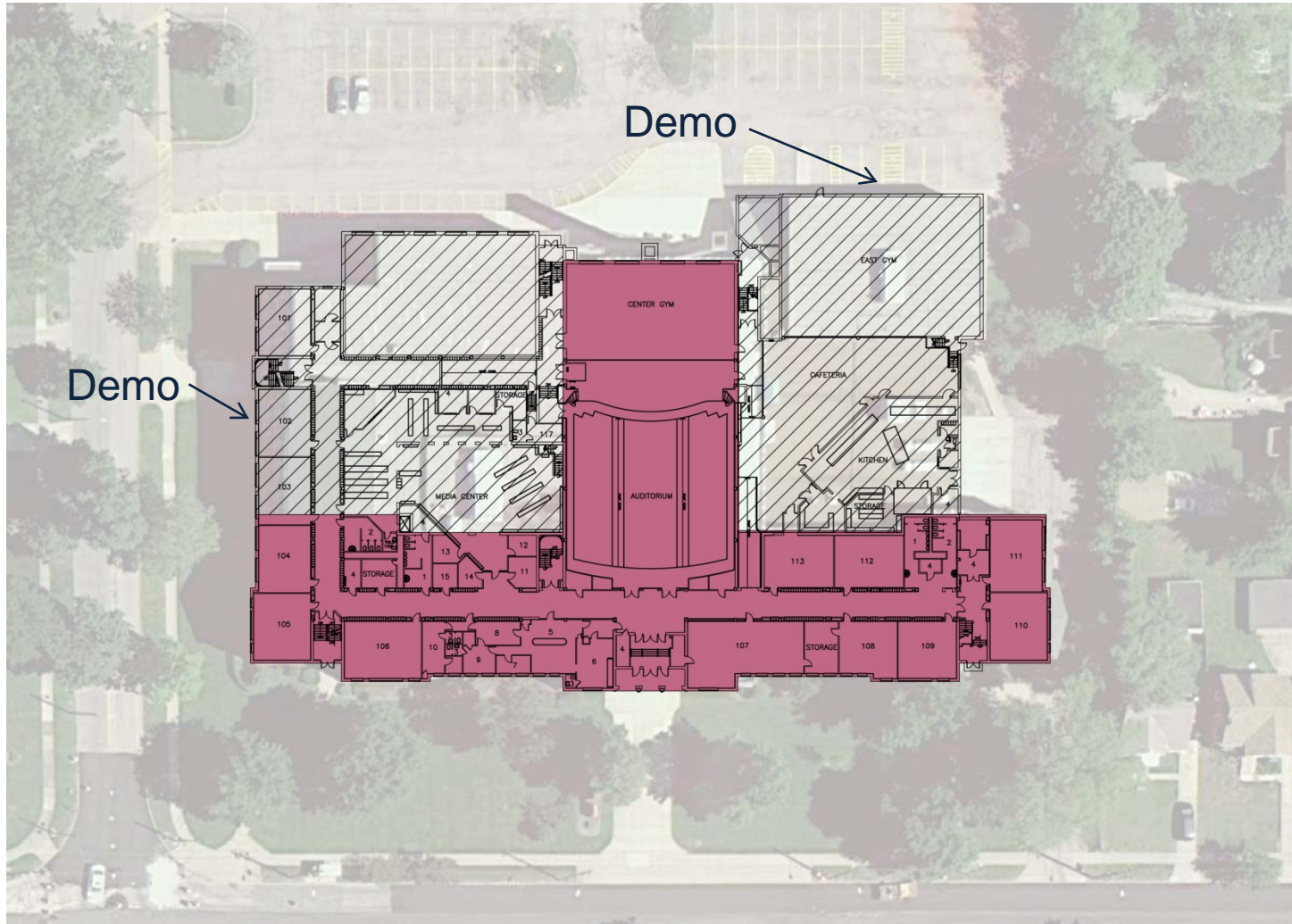
Second Floor

Idea C - High School Plan

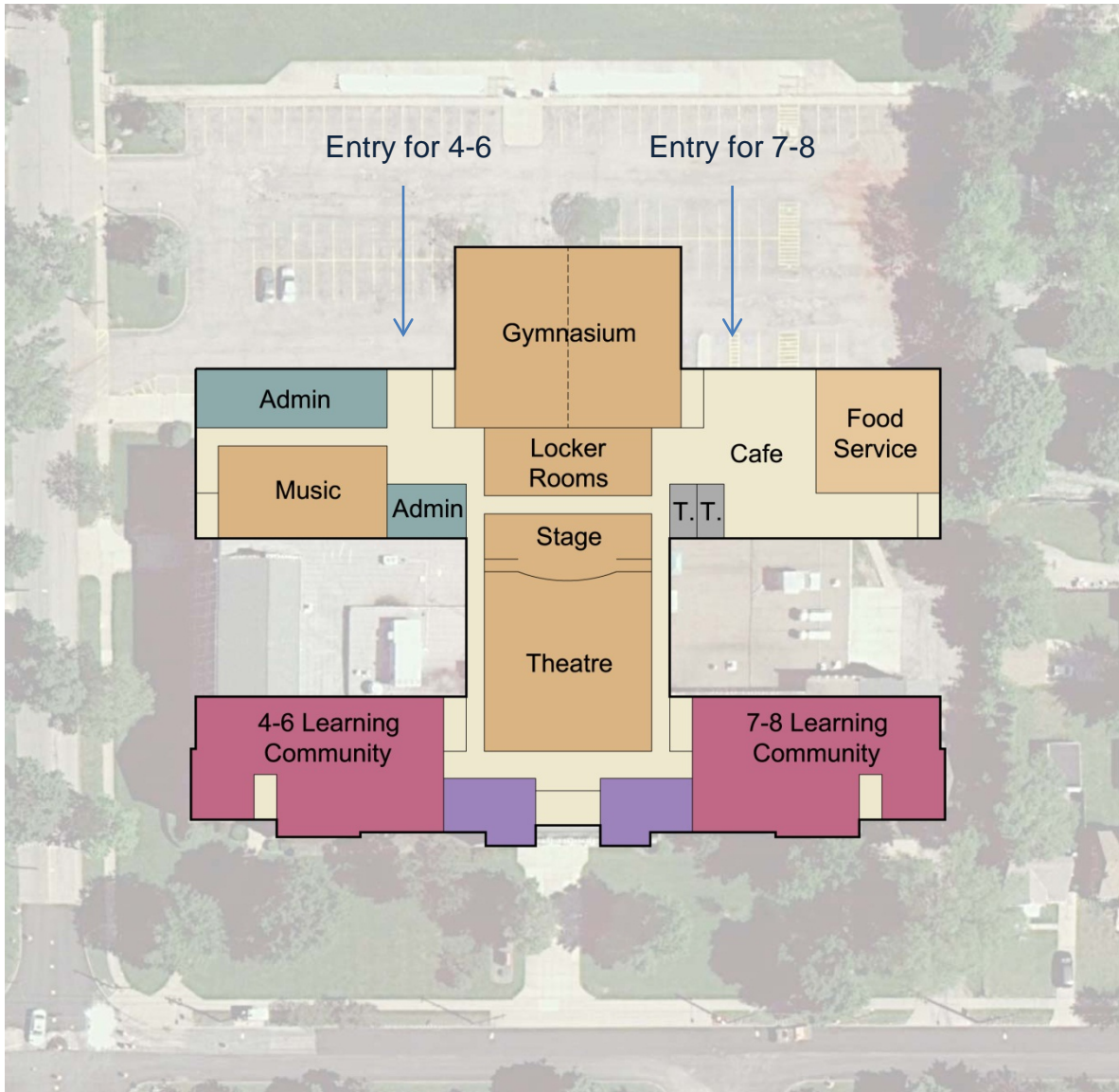


Third Floor

Monticello

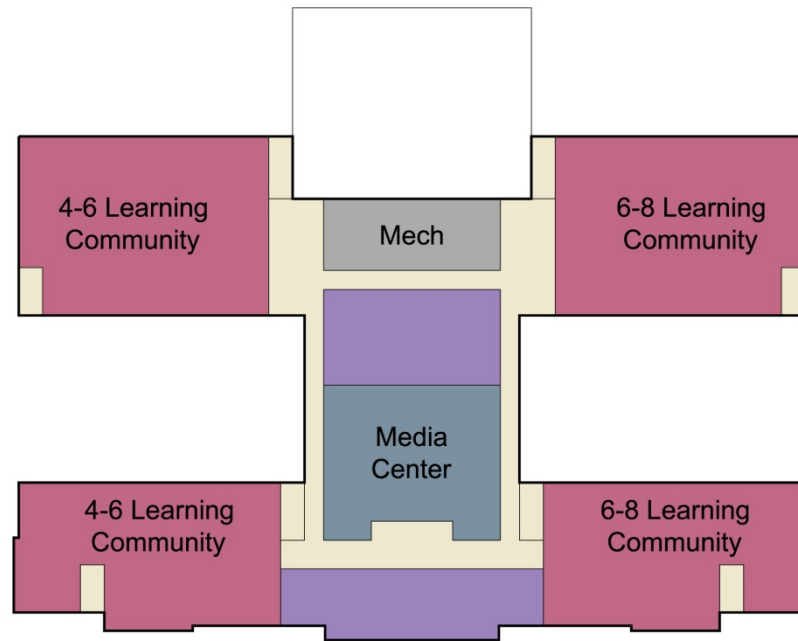


Monticello



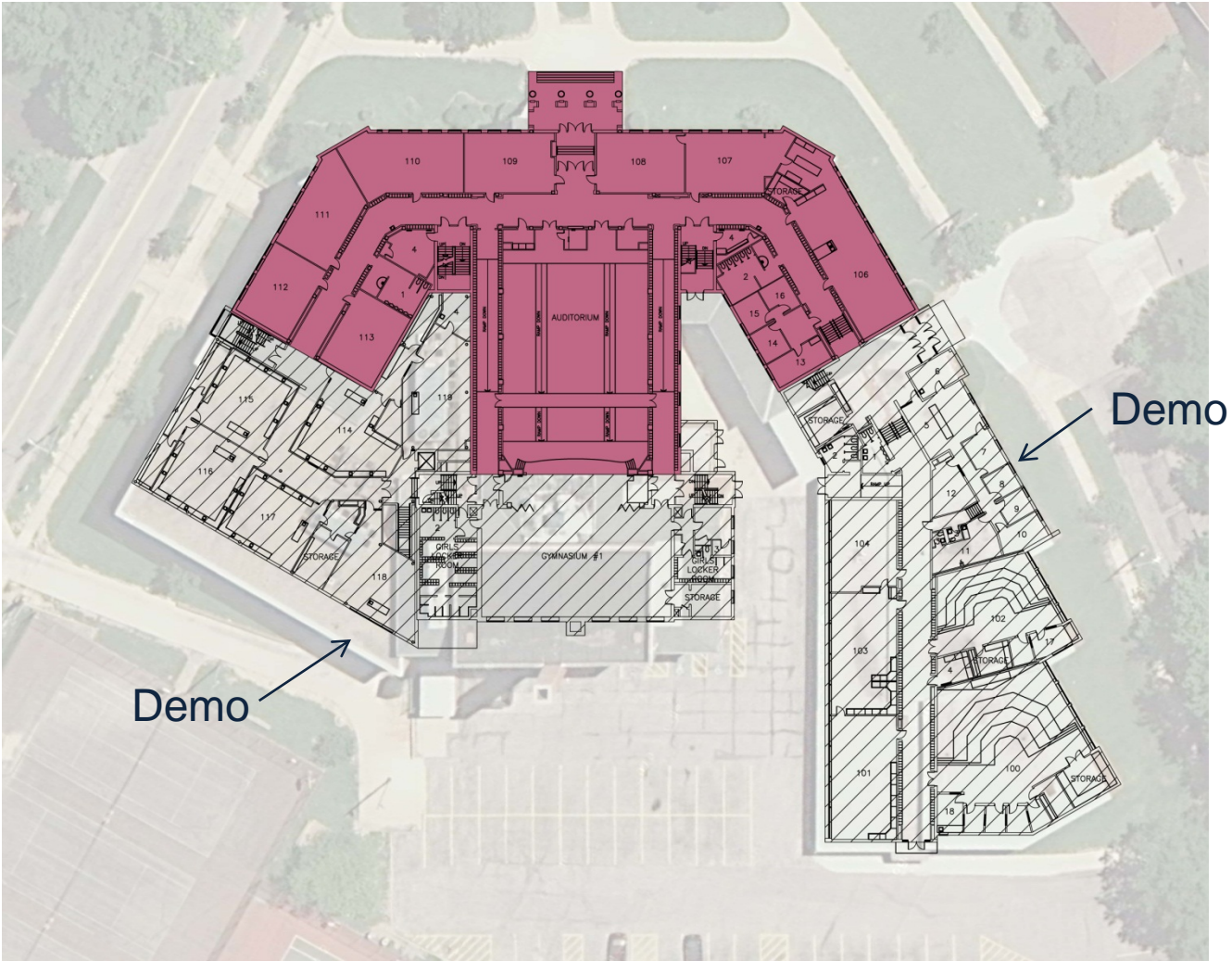
First Floor

Monticello

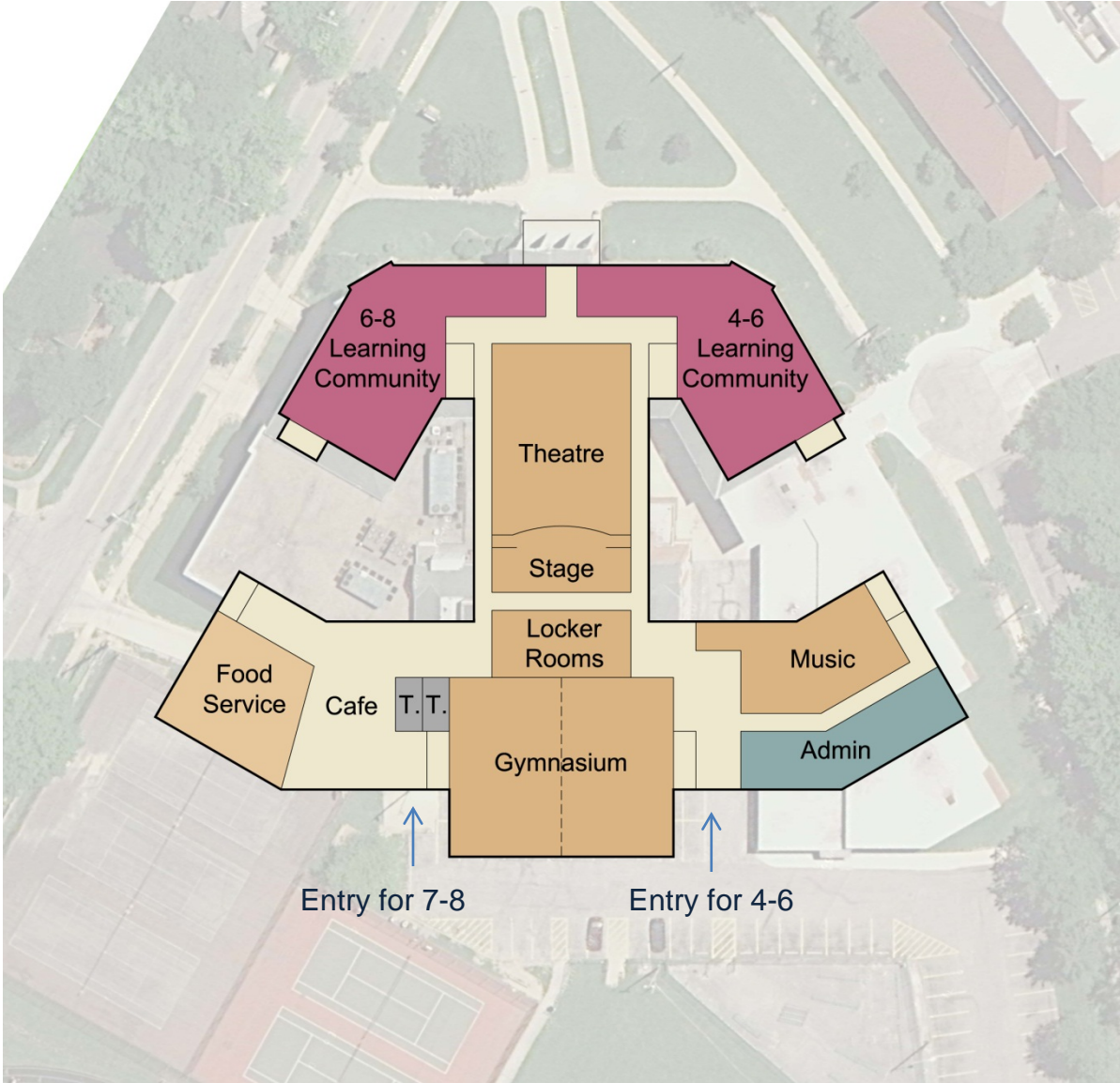


Second Floor

Roxboro

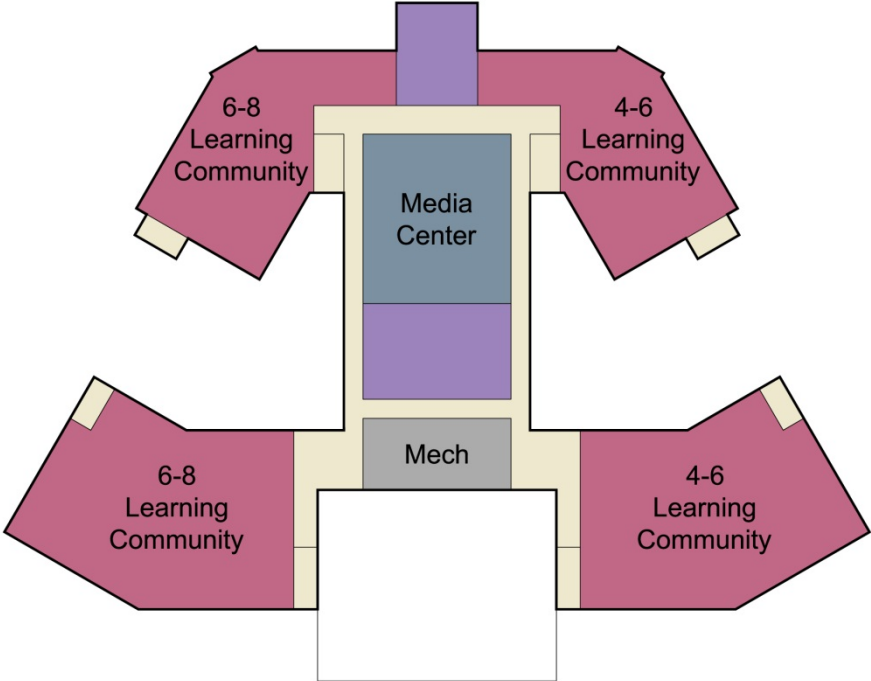


Roxboro



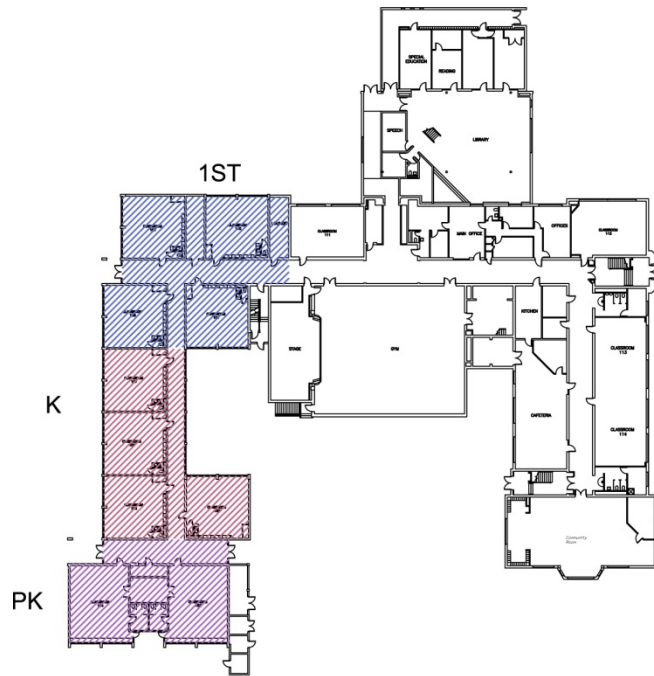
First Floor

Roxboro

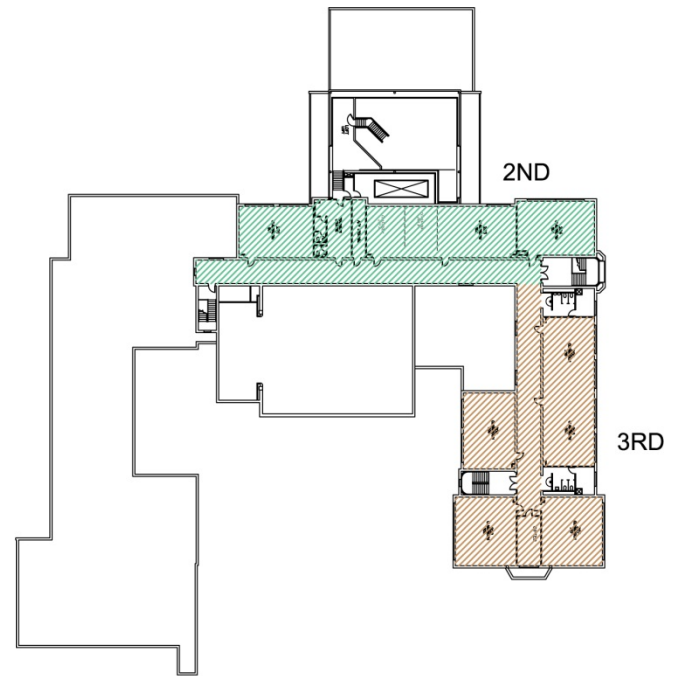


Second Floor

Idea C - Canterbury LCs



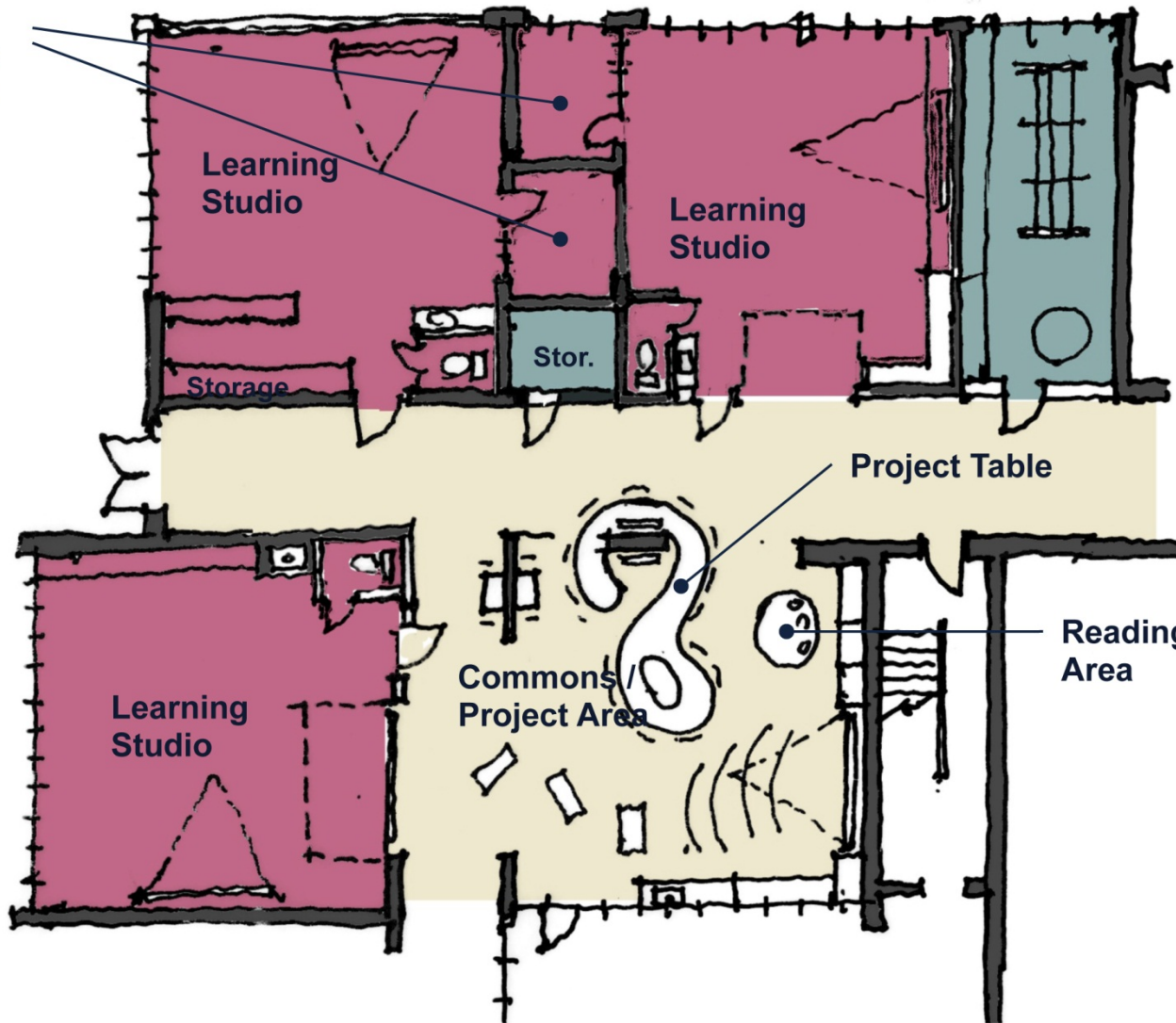
1ST FLOOR



2ND FLOOR

Idea C - Canterbury 1st Grade LC

Small Group Room



Teacher Collaboration

Project Table

Reading Area

Commons/
Project Area

Learning Studio

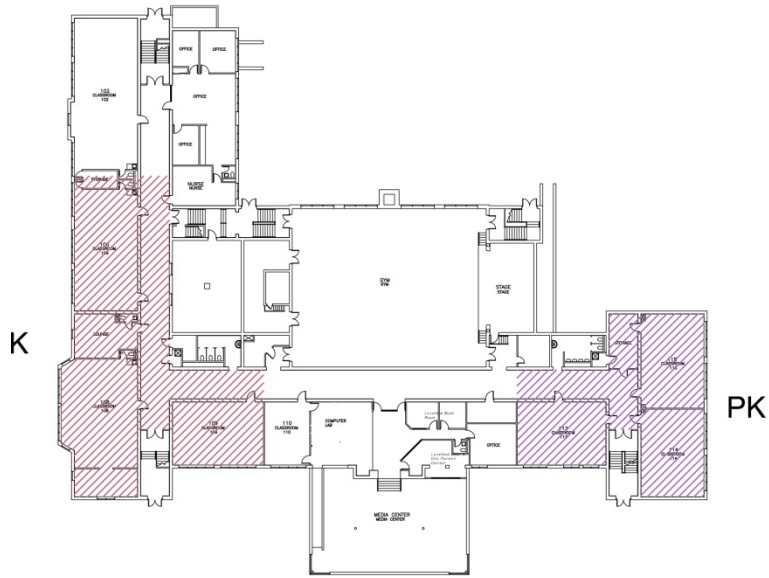
Learning Studio

Learning Studio

Storage

Stor.

Idea C – Oxford LCs

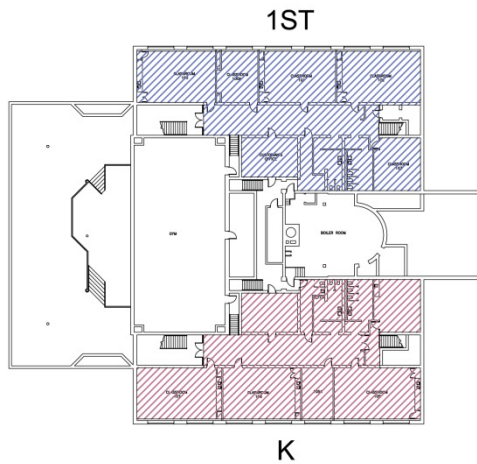


1ST FLOOR

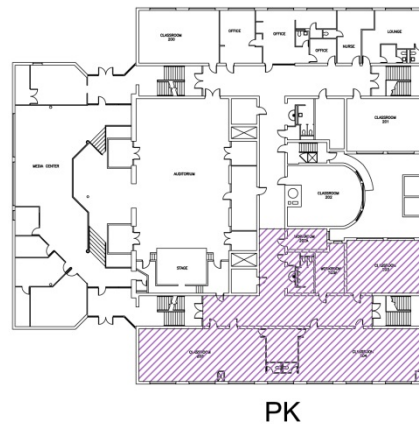


2ND FLOOR

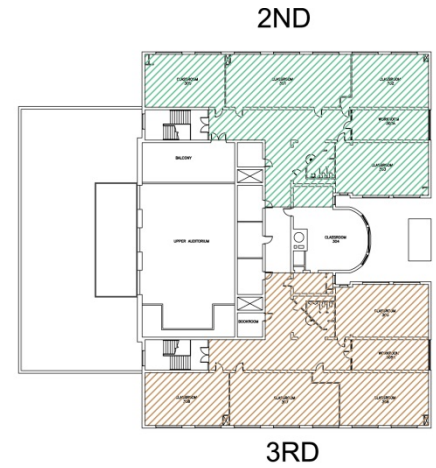
Idea C – Roxboro LCs



LOWER LEVEL

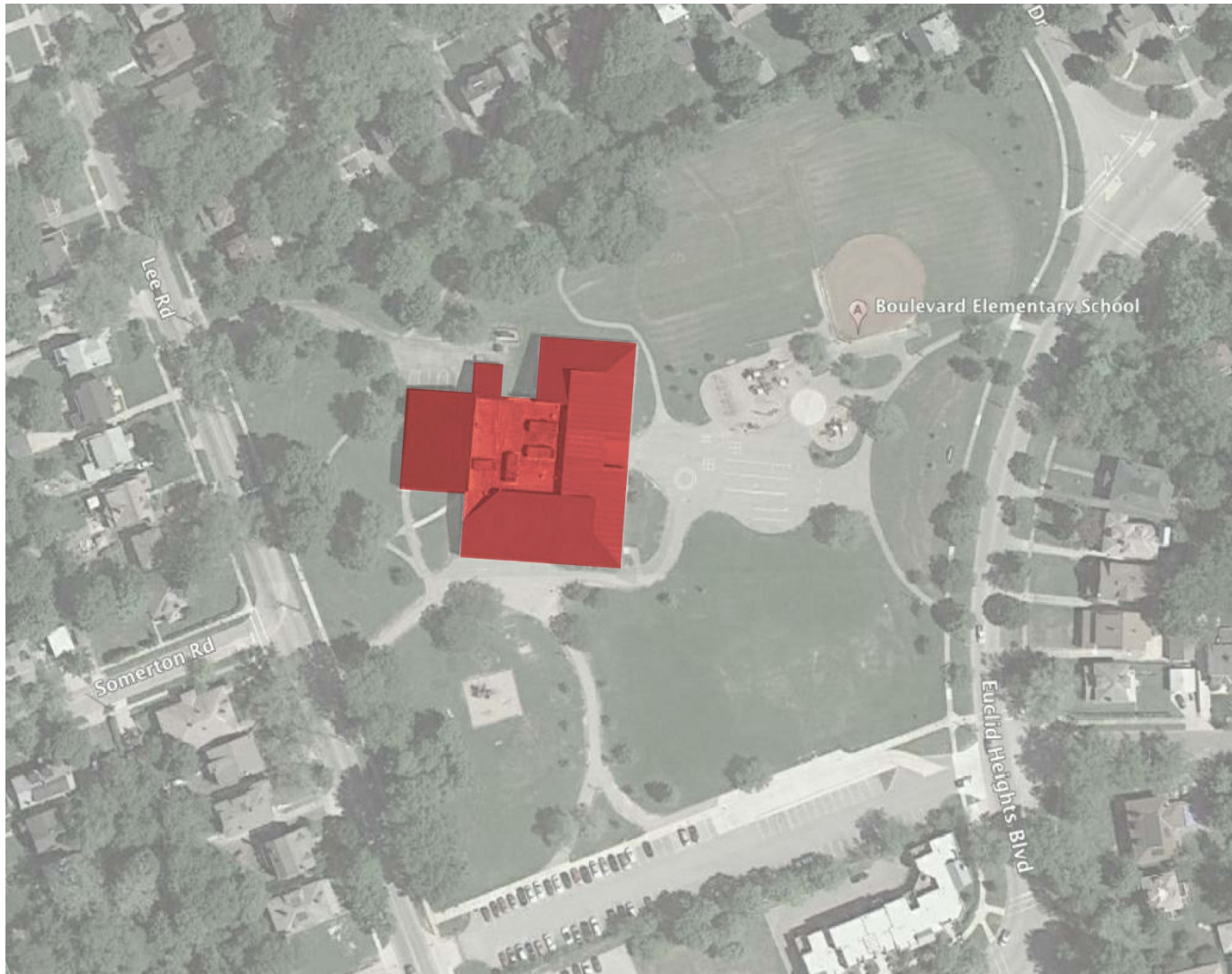


1ST FLOOR



2ND FLOOR

Boulevard Elementary School Demo



Boulevard Elementary School Demo



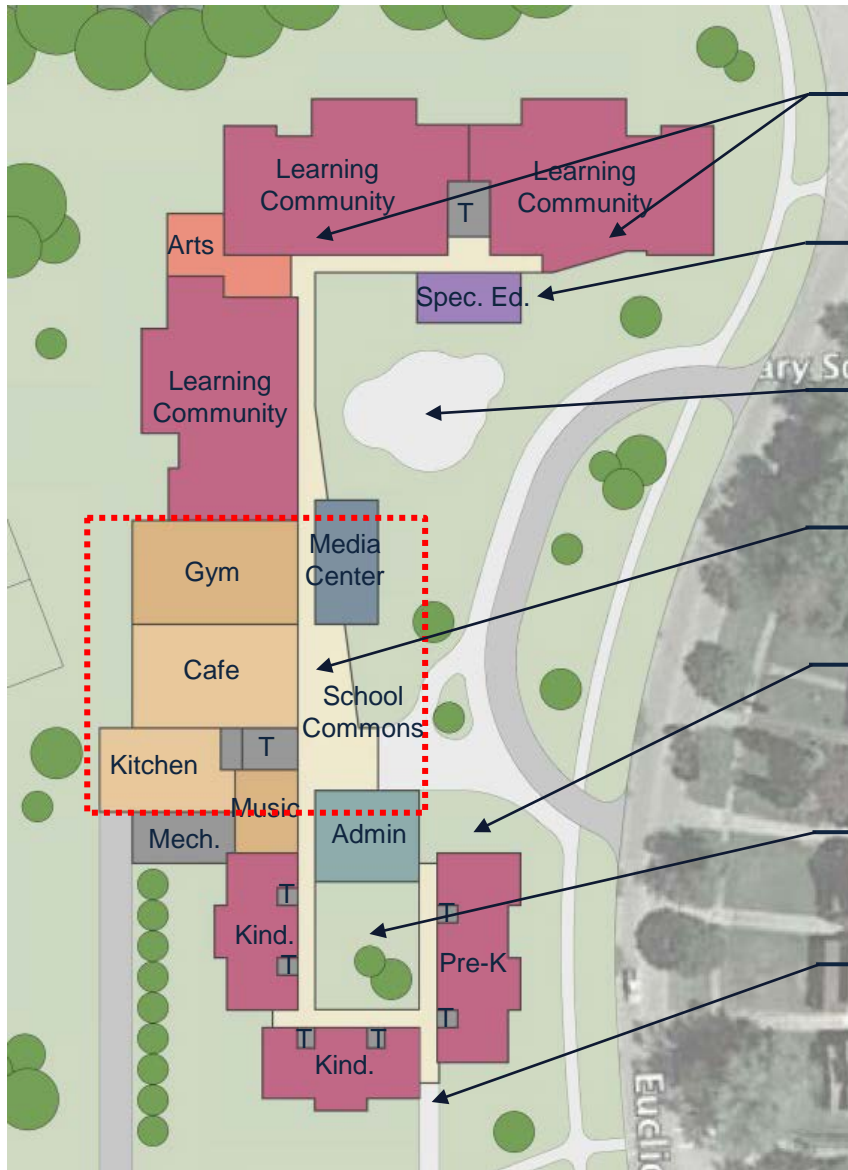
Boulevard Elementary School Site Plan



Boulevard Elementary School Plan



Boulevard Elementary School Plan



- South-facing Learning Communities for optimum light
- Special Education located for tight integration with Learning Communities
- Playground at front of school for before and after school hours
- Shared community spaces at the heart of the school
- Building massing maintains pedestrian-oriented scale to respect residential character of Euclid Heights Boulevard
- Protected kindergarten play / learning courtyard
- Kindergarten and Pre-kindergarten at front of school with separate entrance to parent drop-off area

Boulevard Elementary School Plan

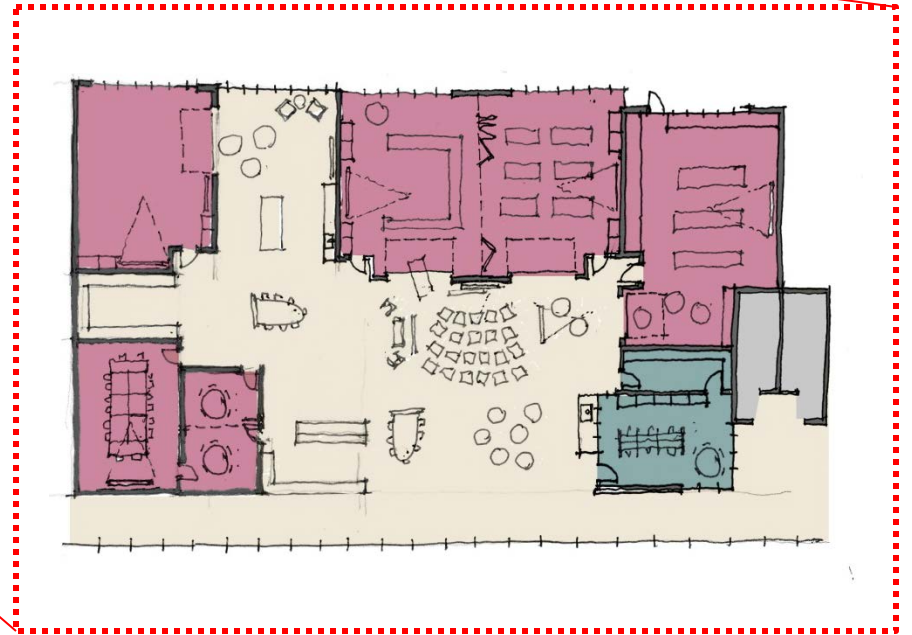


Security point – locked outside school hours

Café expands into School Commons for large events

Security point – locked outside school hours

Boulevard Learning Communities

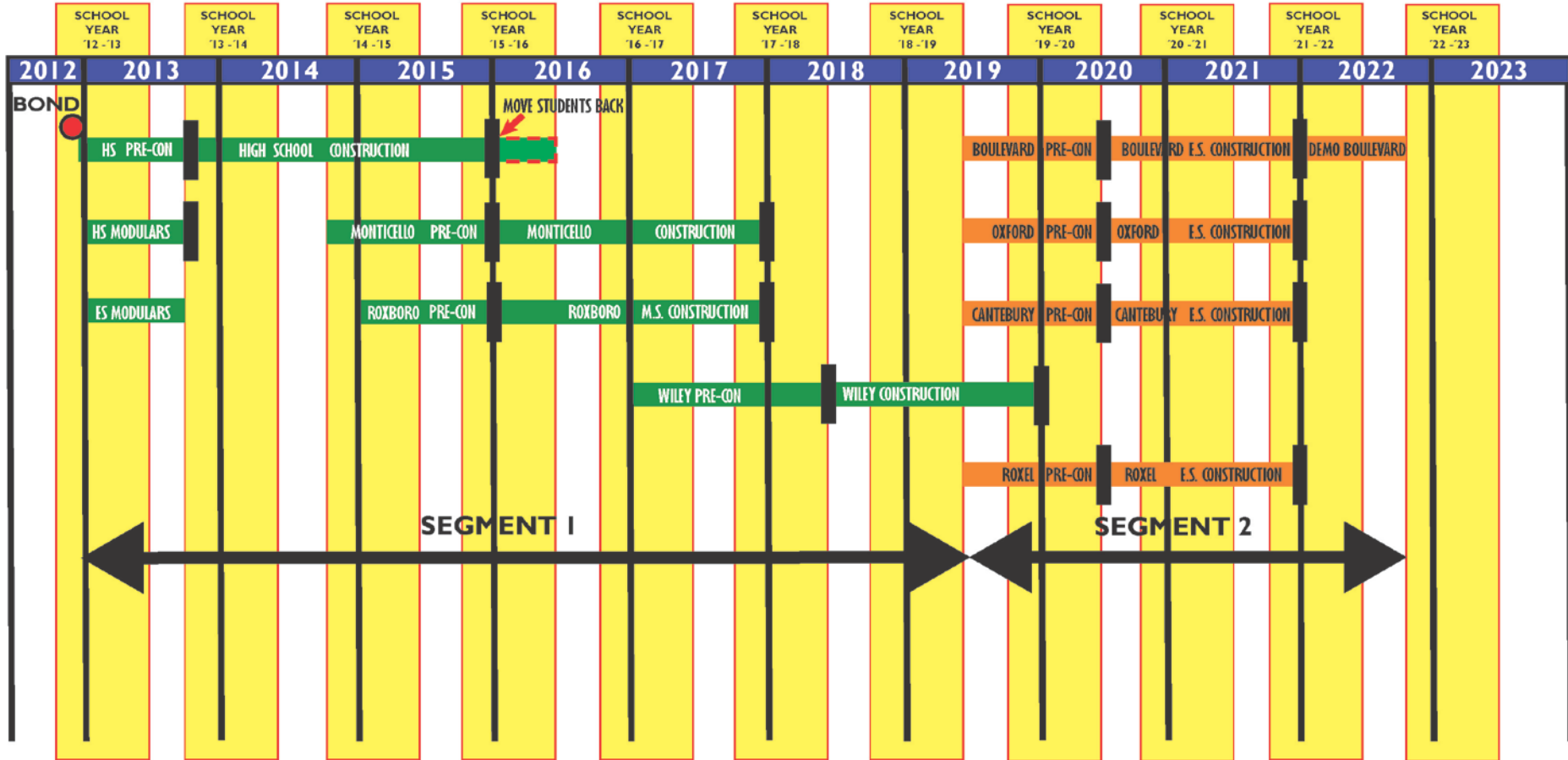


Boulevard Learning Communities



CLEVELAND HEIGHTS / UNIVERSITY HEIGHTS CITY SCHOOL DISTRICT SEGMENTS 1 & 2 PRELIMINARY PHASING PLAN

May 14, 2012





CLEVELAND HEIGHTS / UNIVERSITY HEIGHTS

CITY SCHOOL DISTRICT

MASTER PLAN STUDY IDEA 'C' - HIGH SCHOOL AND 4-8 BUILDINGS SEGMENT 1 & PK-3 BUILDINGS SEGMENT 2

Includes 2012 Enhanced Environmental Report Dollars



DESIGNER: CHUH CITY SCHOOL DISTRICT FNI / Studio Techne / Fanning Howey

DATE: June 7, 2012

REGENCY CONSTRUCTION SERVICES, INC.

PROBABLE COST SUMMARY

Table with columns: DIVISION, BUILDING COMPONENT, MASTER PLAN BUDGET, SEGMENT 1 PHASE I, II, III, SEGMENT 1 TOTAL COST, SEGMENT 2 PHASE I, SEGMENT 2 TOTAL COST, PROJECT TOTAL COST. Rows include various building components like GENERAL REQUIREMENTS, CONCRETE, MASONRY, METALS, etc., and summary rows for TOTAL PROBABLE CONSTRUCTION COSTS, NON-CONSTRUCTION COSTS, SWING SPACE, and TOTAL PROBABLE PROJECT COSTS.

** All Career Tech cost are being included above as born by CHUH City School District. These costs may be divided between the other two districts taking part in the programs. If divided the above Career Tech Costs can be reduced.